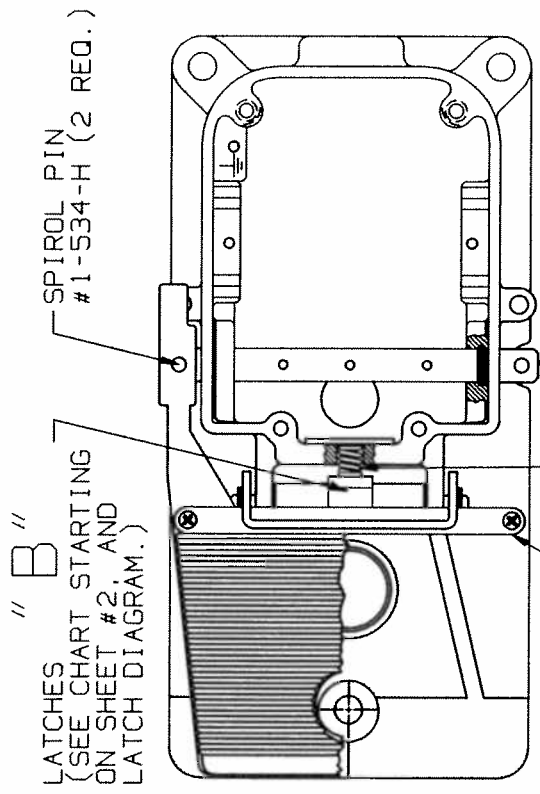
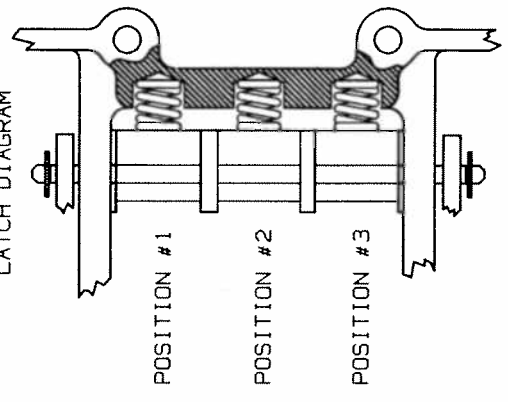


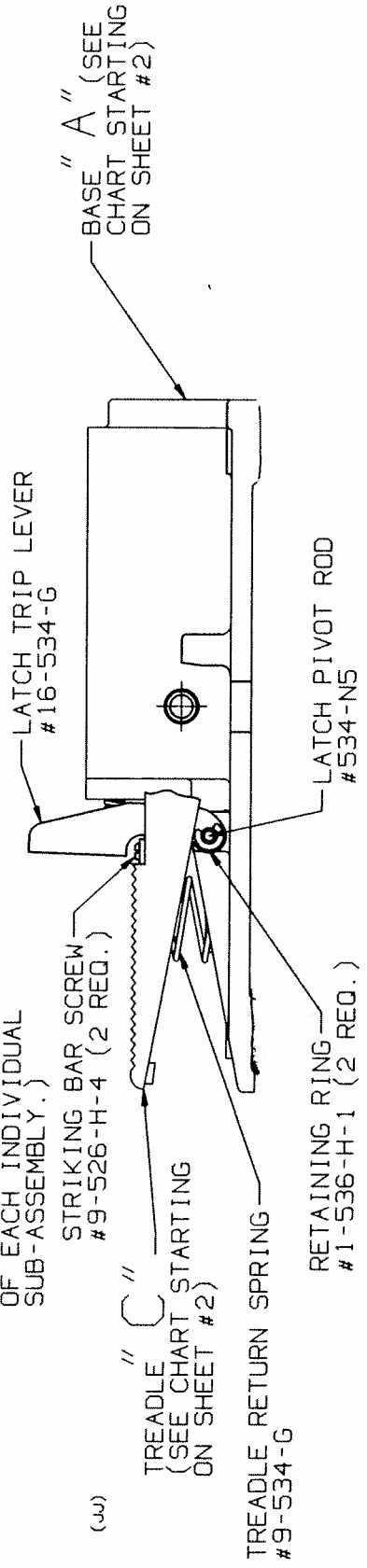
LATCH DIAGRAM



!! IMPORTANT !  
 WHEN THE LATCH POSITIONS #1, #2 & #3 ARE UTILIZED, USE THE 3 LATCHES REQUIRED, ALONG WITH FOUR (4) WASHERS #15-475-DD.  
 WHEN THE LATCH POSITIONS #1 & #3 ARE UTILIZED, USE THE 2 LATCHES REQUIRED, ALONG WITH ONE (1) SPACER #534-US.  
 WHEN THE LATCH POSITION #2 IS UTILIZED, USE THE ONE LATCH REQUIRED, ALONG WITH TWO (2) SPACERS #964-G3-1.  
*use 1/2" 13-534-G*

PIVOT ROD SUB-ASSEMBLY #534-D9  
 APPLY GREASE #LSC-793-26 TO PIVOT ROD O'RINGS & HINGE HOLES ON BASE (2 PLACE'S).

STRIKING BAR #8-534-G  
 LATCH RETURN SPRING #26-534-G  
 (NO. REQ. DEPENDS ON NUMBER OF LATCHES REQ. OF EACH INDIVIDUAL SUB-ASSEMBLY.)



" A " (SEE CHART STARTING ON SHEET #2)

" B "

" C "

NOTE: ALTERNATE METHOD FOR ATTACHING BASE FEET USE SCREW #534-00.

SHEET # 1 OF 3

|   |      |                   |  |          |          |       |      |          |      |
|---|------|-------------------|--|----------|----------|-------|------|----------|------|
| LINEMASTER SWITCH CORP.<br>WOODSTOCK, CT. USA | WME: | BASE SUB-ASSEMBLY |  | DR.      | APP.     | SCALE | MAT. | DWG. NO. | REV. |
|   | FOR  | HERCULES SWITCH   |  | KMH      | RDC      | NONE  |      | 534-G9-7 | NN   |
|   |      |                   |  | 02-09-00 | 02-09-00 |       |      |          |      |