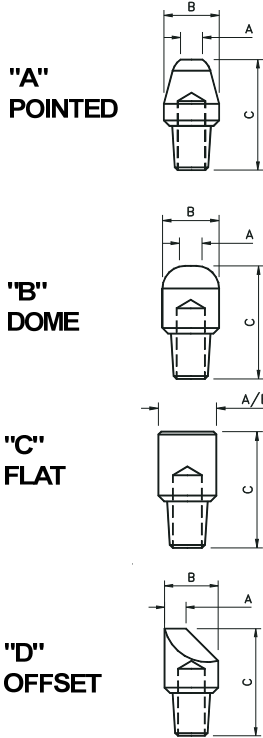


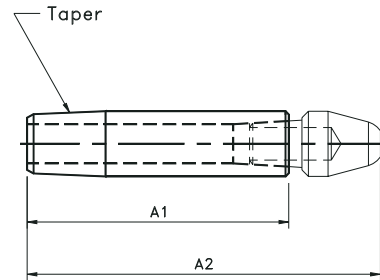
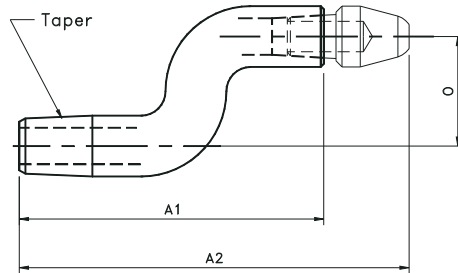


**MALE CAP TIPS AND SHANKS**

**MALE CAP TIPS**



TAPER	ALLOY #100 CLASS 1	ALLOY #130 CLASS 2	ALLOY #Z169 Zr/Cu.	ALLOY #200 CLASS 3	WELD FACE DIA. A	MAJOR DIA. B	OVERALL LENGTH C
"A" Nose (Pointed)							
4 RWMC	CA-14	CA-24	CA-Z4	CA-34	3/16	1/2	1-1/8
5 RWMC	CA-15	CA-25	CA-Z5	CA-35	1/4	5/8	1-1/4
7 RWMC	-	CA-27	-	-	5/16	7/8	1-5/8
"B" Nose (Dome)							
4 RWMC	CB-14	CB-24	CB-Z4	CB-34	3/16	1/2	1-1/8
5 RWMC	CB-15	CB-25	CB-Z5	CB-35	1/4	5/8	1-1/4
7 RWMC	-	CB-27	-	-	5/16	7/8	1-5/8
"C" Nose (Flat)							
4 RWMC	CC-14	CC-24	CC-Z4	CC-34	1/2	1/2	1-1/8
5 RWMC	CC-15	CC-25	CC-Z5	CC-35	5/8	5/8	1-1/4
7 RWMC	-	CC-27	-	-	7/8	7/8	1-5/8
"D" Nose (Offset)							
4 RWMC	CD-14	CD-24	CD-Z4	CD-34	3/16	1/2	1-1/8
5 RWMC	CD-15	CD-25	CD-Z5	CD-35	1/4	5/8	1-1/4
7 RWMC	-	CD-27	-	-	5/16	7/8	1-5/8



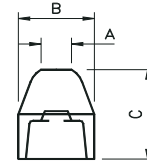
5 RW Taper Code No.	Shank Length A1	Ass'y Length A2	Tip Offset O
OS-2528-4	2-1/2	3-1/4	1/4
OS-2528-8	2-1/2	3-1/4	1/2
OS-2534-16	3-1/4	4	1
OS-25212-20	2-3/4	3-1/2	1-1/4
OS-25312-24	3-3/4	4-1/2	1-1/2
OS-25212-28	2-3/4	3-1/2	1-3/4
OS-25314-40	3-7/8	4-5/8	2-1/2
OS-2534-32	3-1/4	4	2

4 RW TAPER (#1MT)	5 RW TAPER (#2MT)	SHANK LENGTH A1	ASSY. LENGTH A2
CS-245	CS-255	1-1/4	2
CS-246	CS-256	1-1/2	2-1/4
CS-247	CS-257	1-3/4	2-1/2
CS-248	CS-258	2	2-3/4
CS-249	CS-259	2-1/4	3
CS-2410	CS-2510	2-1/2	3-1/4
CS-2411	CS-2511	2-3/4	3-1/2
CS-2412	CS-2512	3	3-3/4
CS-2413	CS-2513	3-1/4	4

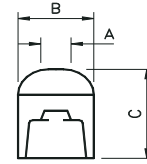


## FEMALE CAP TIPS

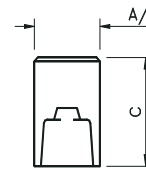
RWMA Female Cap Tape	Alloy #130 Class 2	Alloy Z#169 Zirc. Cu.	Alloy "G" Glidcop	Weld Face A	Major Diameter B	Overall Length C
<b>"A" Nose (Pointed)</b>						
4 RW	CAF-24	CAF-Z4	CAF-G4	3/16	1/2	0.84
5 RW	CAF-25	CAF-Z5	CAF-G5	1/4	5/8	0.88
6 RW	CAF-26	CAF-Z6	CAF-G6	9/32	3/4	1
<b>"B" Nose (Dome)</b>						
4 RW	CBF-24	CBF-Z4	CBF-G4	3/16	1/2	0.84
5 RW	CBF-25	CBF-Z5	CBF-G5	1/4	5/8	0.88
6 RW	CBF-26	CBF-Z6	CBF-G6	9/32	3/4	1
<b>"C" Nose (Flat)</b>						
4 RW	CCF-24	CCF-Z4	CCF-G4	1/2	1/2	0.84
5 RW	CCF-25	CCF-Z5	CCF-G5	5/8	5/8	0.88
6 RW	CCF-26	CCF-Z6	CCF-G6	3/4	3/4	1
<b>"D" Nose (Offset)</b>						
4 RW	CDF-24	CDF-Z4	CDF-G4	3/16	1/2	0.84
5 RW	CDF-25	CDF-Z5	CDF-G5	1/4	5/8	0.88
6 RW	-	-	-	9/32	3/4	1



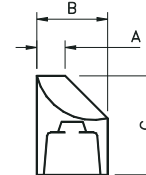
CAF (POINTED)



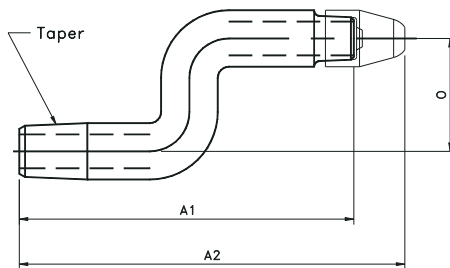
CBF (DOME)



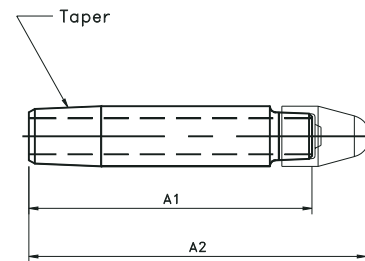
CCF (FLAT)



CDF (OFFSET)



OFFSET FEMALE CAP SHANKS



STRAIGHT FEMALE CAP SHANKS

5 RW Taper Code No. Alloy #130	Shank Length A1	Ass'y Length A2	Tip Offset O
OSF-2511-8	2-3/4	3-1/4	1/2
OSF-2511-12	2-3/4	3-1/4	3/4
OSF-2511-16	2-3/4	3-1/4	1
OSF-2513-8	3-1/4	3-3/4	1/2
OSF-2514-16	3-1/2	4	1
OSF-2515-20	3-3/4	4-1/4	1-1/4

4RW Taper (#1 MT)	5RW Taper (#2 MT)	Shank Length A1	Ass'y Length A2
CSF-246	CSF-256	1-1/2	2
CSF-248	CSF-258	2	2-1/2
CSF-2410	CSF-2510	2-1/2	3
CSF-2412	CSF-2512	3	3-1/2
CSF-2414	CSF-2514	3-1/2	4
CSF-2416	CSF-2516	4	4-1/2

**FEMALE CAP TIPS AND SHANKS**